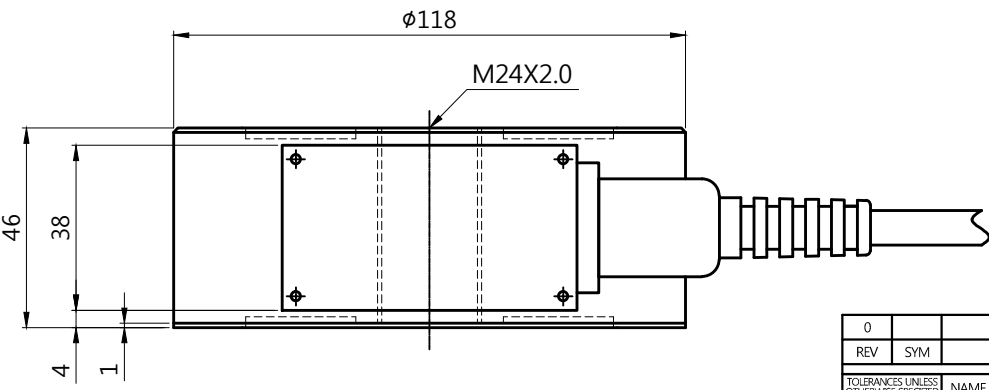
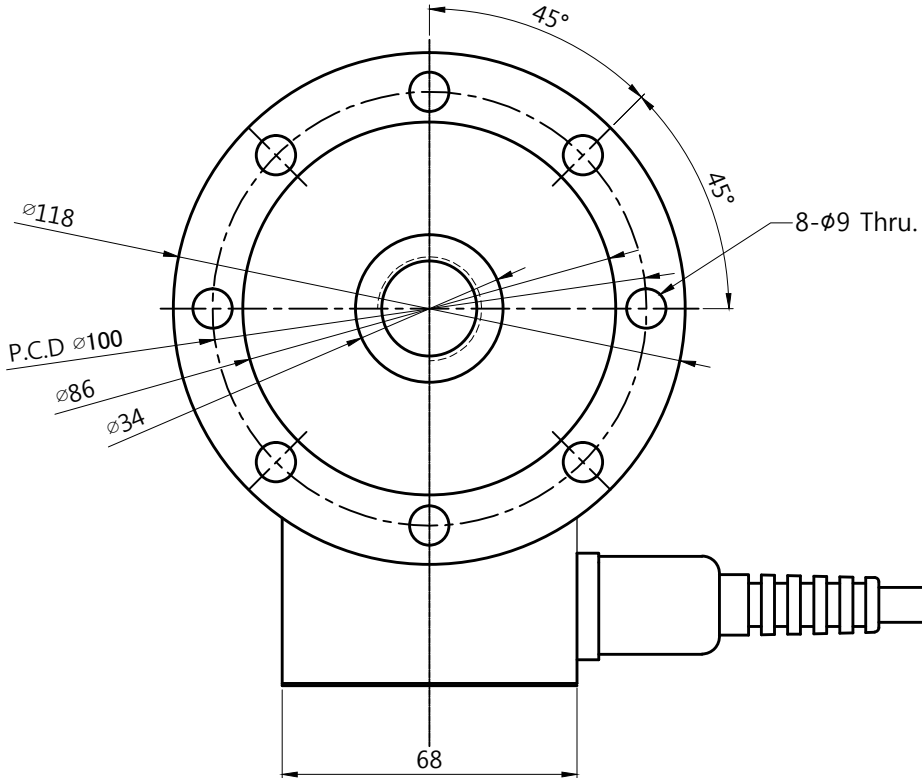


1 2 3 4 5 6 7 8 9 10

A  
B  
C  
D  
E  
F  
G  
H  
I  
J



### SPECIFICATION

CAPACITY (kgf)	2000	TEMPERATURE EFFECT ON	
RATED OUTPUT (mV/V)	2.0 ± 0.05	ZERO VALUE (% / 10 °C)	±0.05
ZERO BALANCE (mV/V)	0 ± 0.03	SPAN VALUE (% / 10 °C)	±0.05
ACCURACY CLASS	-	COMPENSATED TEMP. RANGE (°C)	-10 ~ 40
COMBINED ERROR (%R.O)	≤0.05	OPERATING TEMP. RANGE (°C)	-20 ~ 80
NON-LINEARITY (%R.O)	≤0.05	EXCITATION	
HYSTERESIS (%R.O)	≤0.05	RECOMMENDED (V)	10
REPEATABILITY (%R.O)	-	MAXIMUM (V)	15
CREEP FOR 30 MIN. (%R.O)	-	RESISTANCE	
RETURN FOR 30 MIN. (%R.O)	-	INPUT (Ω)	350 ± 3.5
SAFETY OVERLOAD (%)	150	OUTPUT (Ω)	350 ± 3.5
CABLE SPECIFICATION	φ8*4P*10m (PVC)	INSULATION (MΩ)	>2000

- RED (EX+)
- WHITE (EX-)
- GREEN (SIG+)
- BLUE (SIG-)
- SHIELD (BLACK)

0	THE FIRST DRAWING (초도작성)			2017.03.14	S.E.PARK	-	-	
REV	SYM	DESCRIPTION			DATE	DRAWN	CHECKED	APPROVED
TOLERANCES UNLESS OTHERWISE SPECIFIED		NAME OR TITLE			 CORPORATION 262, GEURUJOGAE-RO, GWANGJU-K-MYOUNG YANGJU-SI, GYEONGGI-DO, REP OF KOREA			
ANGULAR ± 0.5		ZLSP-2T						
DECIMAL ± 0.1		SPECIFICATION						
QTY/SET	FIRST USED IN ASSEMBLY	-	FIRST MADE FOR	-	CONTRACT OR CUSTOMER NO.	-	MATERIAL	STEEL
N/S	DIMENSIONS ARE IN	mm / inch	DRAWING SCALE	1:1	DRAWING No.	-	END FINISH	PAINTED